

McDonald's Pizza Papertoy - 1:3 Scale

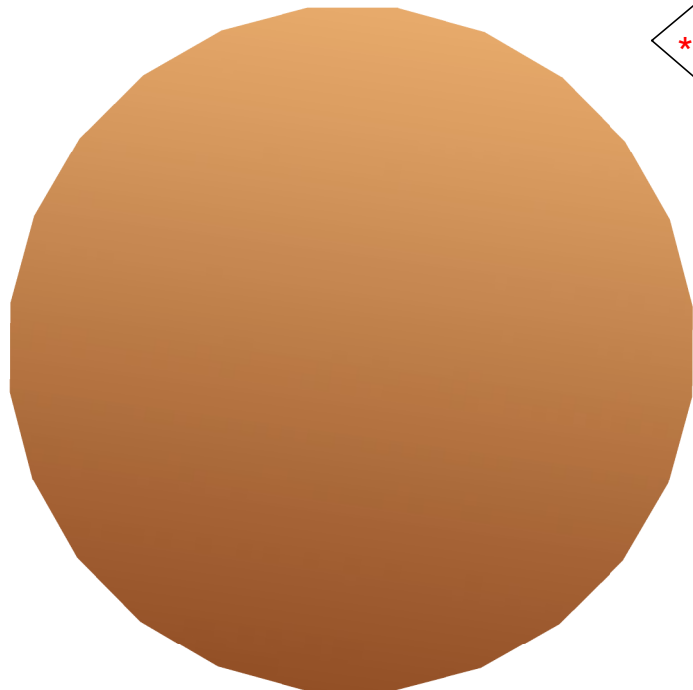
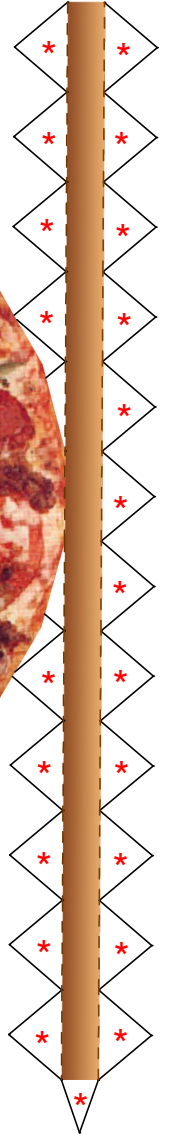


INSTRUCTIONS:

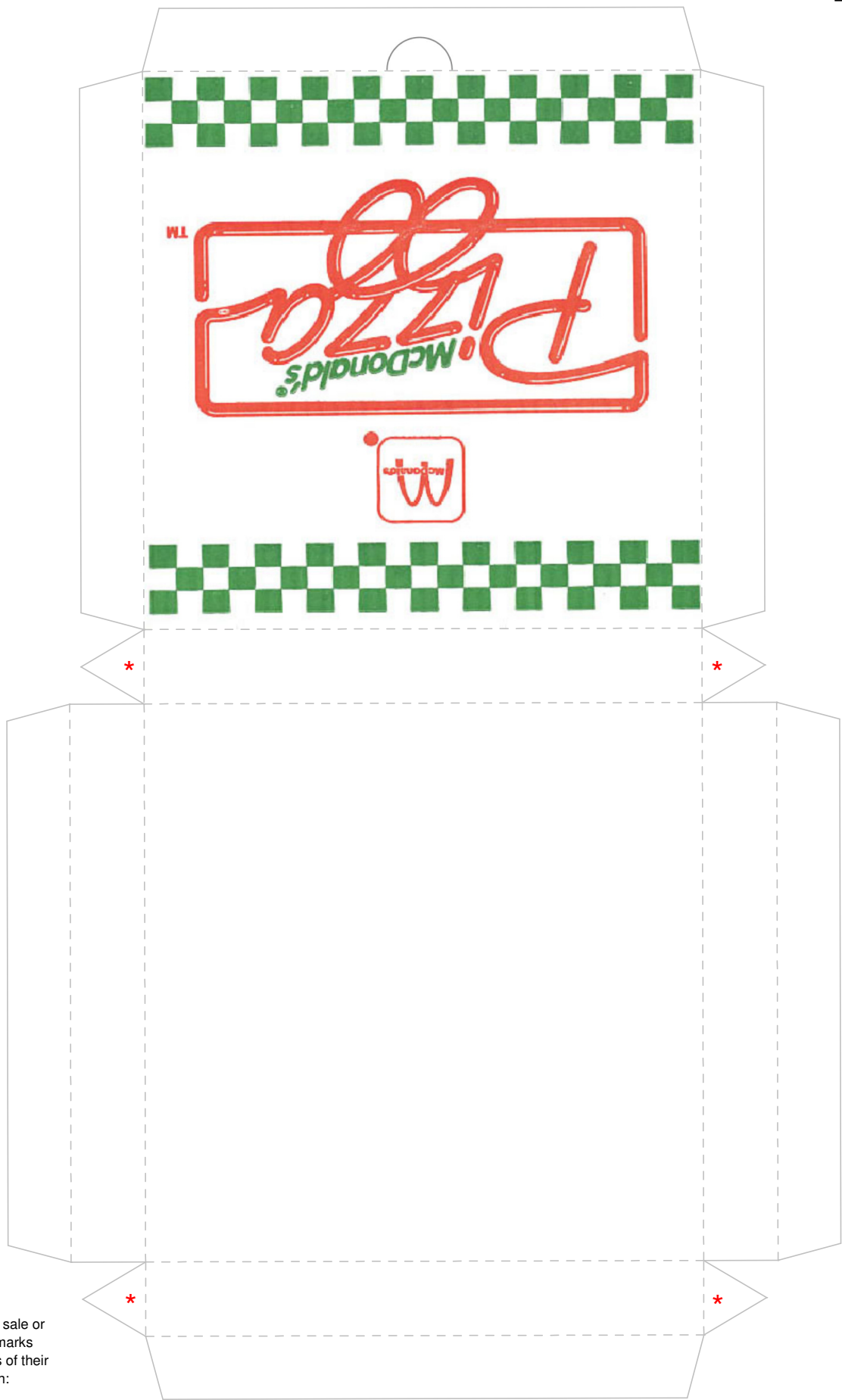
1. Print the template on cardstock.
2. Cut out the pieces.
3. Make a mountain fold on the dashed lines. Before folding, trace lightly along the folds with a ruler and an empty pen or dull exacto type knife for cleaner, more angular folds.
4. Glue sparingly where indicated by the red stars. Do not glue the three flaps on the pizza box lid.
5. Cut at the half circle on the pizza box lid to create a finger hole for opening the lid.



PIZZA TOP



PIZZA BOTTOM



Glue the back of this flap

Glue the back of this flap

Glue the back of this flap

PIZZA BOX

This fan-created model is not for sale or redistribution. Any and all trademarks and copyrights are the properties of their respective owners. Model design: © 2009 C. Jefferson OConnor, www.tektonen.blogspot.com The image used in creating this model was downloaded, adapted and the resulting model distributed under the allowances of Creative Commons Attribution 2.0 Generic: <http://creativecommons.org/licenses/by/2.0/>